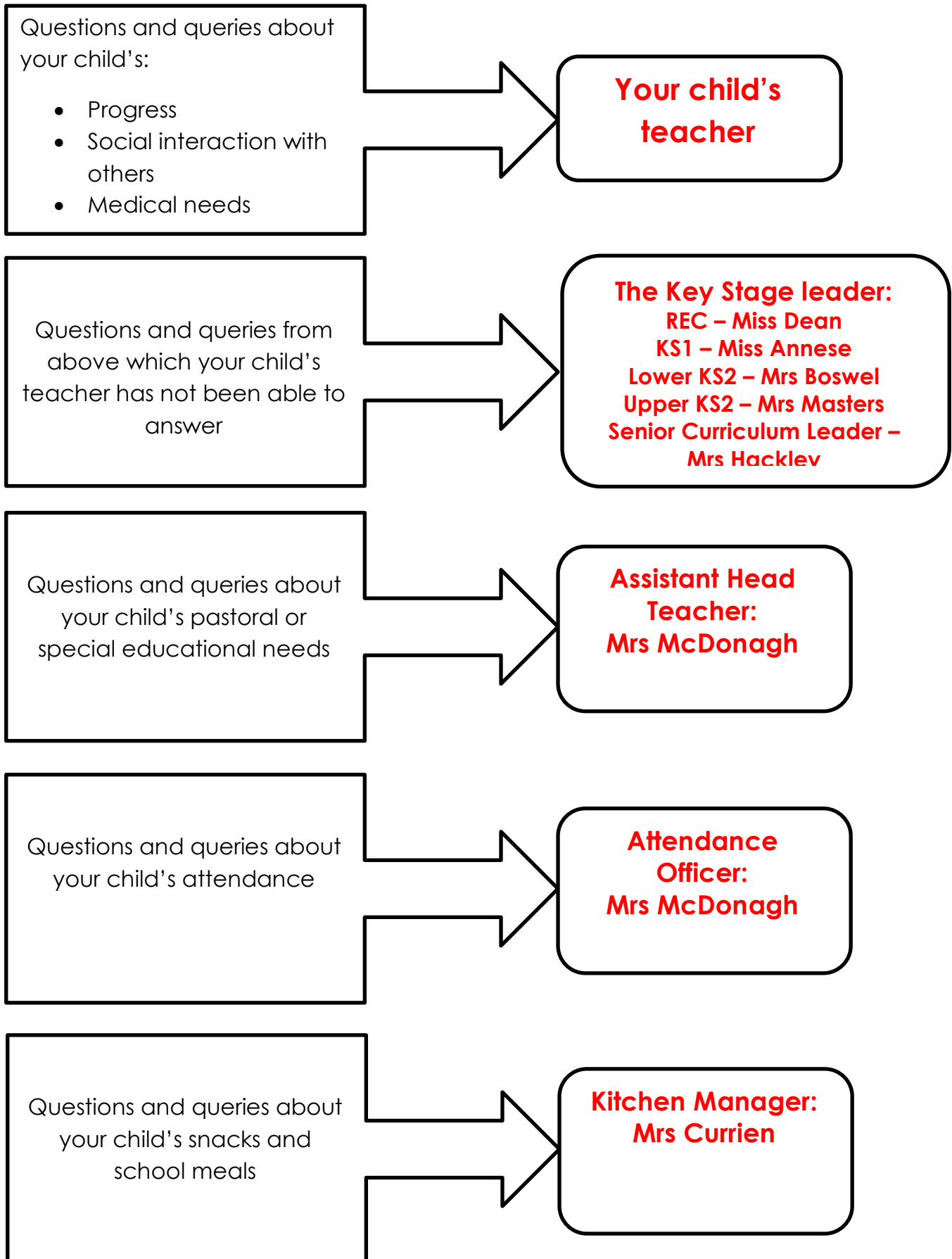
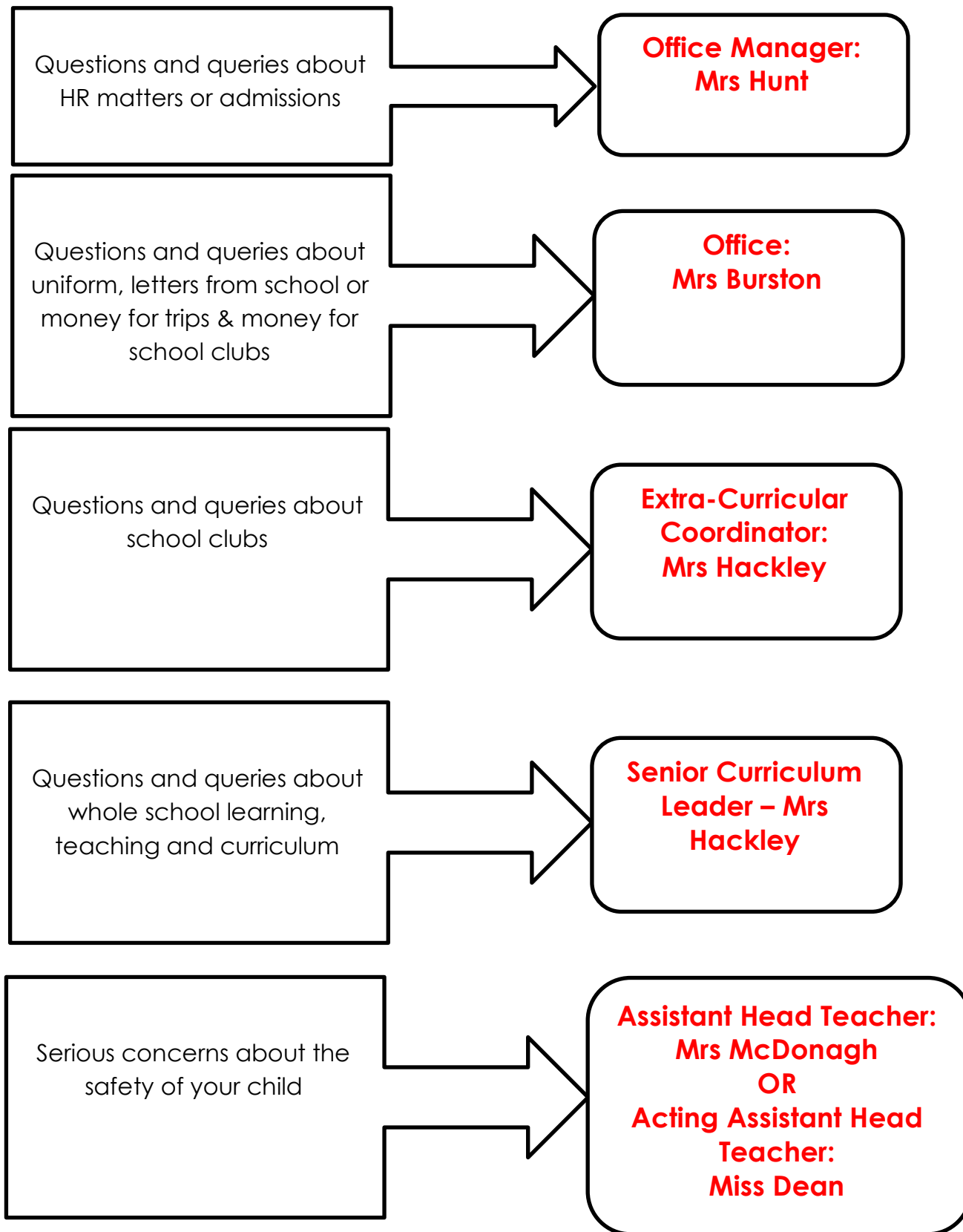


Due to the ever changing structure of the Senior Leadership Team, please refer to the diagram below to support you in approaching the appropriate member of staff with questions, queries and concerns:





Please note that if you have a complaint or concern you must approach your child's teacher first. If necessary they will direct you to the most appropriate member of staff to help you with your concern. If you wish to make a formal complaint you can do so by following the complaints procedure outlined on our school website: <http://www.stjosephsworcester.co.uk/> which will be received and dealt with by the Chair of Governors.